

I. Specification

- Working voltage: 220VAC,50HZ/60HZ
- Loading capacity: 2HP, 240VAC
- Working frequency: 433.92MHz
- Built-in fuse: electrocircuit (0.5A), motor (10A)
- Temperature range: -20°C to 60°C.
- Code:Rolling code/Fixed code
- with external button and photocell protection
- Size: 113×74×44MM
- Weight: 338g

II. Safety Instruction

- For security, please read the instructions carefully before initial operation; making sure that the power is off before connection.
- The received signal may be interfered by other communication devices. (e.g. the wireless control system with the same frequency range)
- It is forbidden to control the high-risk coefficient equipment / system. (e.g. cranes)
- It should be applied in dry indoor place or in the electric appliance place.

IV. Set up

- Learning / memorizing transmitters** Press the learning button on the panel,LED turns into red and gets into learning state;press the same button twice on the same transmitter,LED blinks for a while and turns into green shows transmitter has been learned successfully.
- Erasing Transmitter:** Continue pressing the learning button (about 8s) until LED turns green then release the learning button, LED turns red (about 1s) then turns green. It indicates that the erasing process is successful

V. Operational process

- Three button control system with transmitter and non-Latch model**
Button 1,2,3 in transmitter is in correspondence with open, close and stop.
- Single button control system and non-Latch model**
Press-Open(motor works clockwise), press-stop, press-close(motor works anti clockwise),press-stop,and so on in a loop.
Single-button control is only effective to the learned button; if a new button of transmitter learned into the control panel, the former one is useless. (e.g.: if learned button ① at first, and then button ② or ③, the former button ① becomes invalid).
- Infrared sensor protection**
It only work when door closing. Motor stops after 1 second and reverse when photocell signal disconnecting during door closing.
(External photocell PHOTO port connects photocell normally close switch)
- with external switch**
External switch is single button control.Press-Open(motor works clockwise), press-stop, press-close(motor works anti clockwise),press-stop,and so on in a loop.

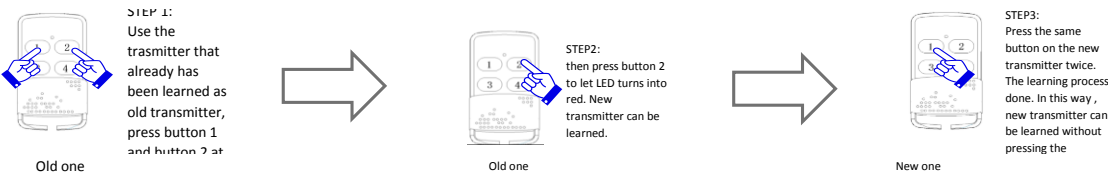
NOTE:

- Single-button control refers to single button in transmitter; ▲ ■ ▼ in control panel is in correspondence with open, close and stop.
- Max running time means that the motor's maximum running time at a time is 100S; the motor stops immediately if longer than 100S.
- ▲ ■ ▼ in control panel and OPEN STOP CLOSE button in transmitter are in correspondence with open, close and stop.

VII Model list

| | | | | | | | | | | | |
|---------------------|---------------|---------------|---------------|---------------|---------------|---------------|---------------|---------------|---------------|---------------|--|
| Model 220VAC | TMS161 | TMS162 | TMS261 | TMS262 | TMS163 | TMS164 | TMS165 | TMS166 | TMS265 | TMS266 | |
| Model 110VAC | TMS181 | TMS281 | TMS182 | TMS282 | | | | | | | |
| Frequency | 433.92mHZ | | | | | | | | | | |
| Code | Rolling code | | | | Fixed code | | | | | | |
| Transmitters stored | 30 | 30 | 30 | 30 | 300 | 300 | 60 | 60 | 60 | 60 | |
| Control system | Three buttons | Single button | Three buttons | Single button | Three buttons | Single button | Three buttons | Single button | Three buttons | Single button | |
| Color | Black | Black | White | White | Black | Black | Black | Black | White | White | |

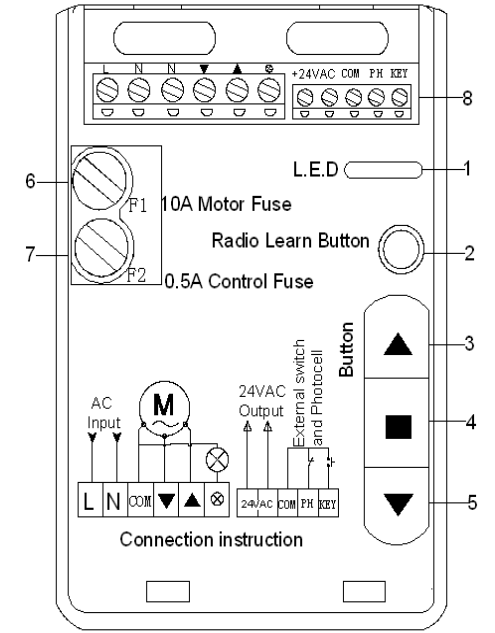
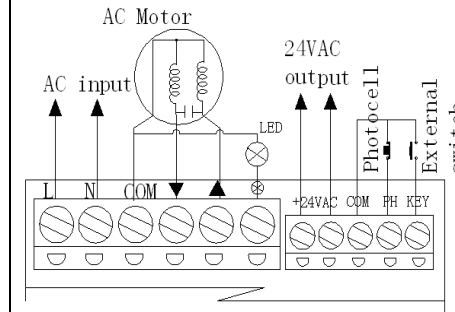
VIII Self learning: learning new remotes by old remotes



The interpretation and ownership of this manual belong to Hiland company. Any change of the product can be without prior notice.

V. Tubular Motor Control Panel Work Process

- LED: Power, indicated light
 - Transmitter learning and deleting button
 - 4, 5. Open, stop, close button
 - Stop button
 - Fuse: 10A
 - Fuse: 0.5A
 - terminal blocks
- L\N connects working power
 - COM/▲/▼ connects motor
 - LED connects flash lamp
 - 24VAC output 24V AC voltage
 - GND/PH connects external photocell protection switch
 - GND/External switch connects external control button



VIII. Installation Process

